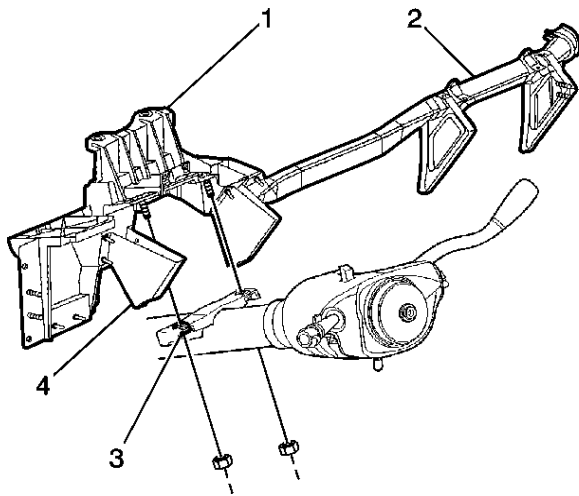


Instrument Panel Support Description



Important

Under no circumstance is the magnesium support to be repaired in any way. The magnesium support must be replaced if any of the following conditions are present after a collision:

- The steering column capsules (3) have released or the column has collapsed.
- The steel knee bolster brackets (4) are bent.
- The parts which attach to the magnesium support do not fit.

The instrument panel support is comprised of a magnesium steering column support (1) and die-formed tube (2). The assembly functions as a structural cross-vehicle beam, an air-bag support, and an instrument panel carrier. The assembly consolidates many different steel and plastic components. The magnesium instrument panel support is designed in order to deform and absorb the energy generated by a severe impact.
